



# GMT MONTHLY MEMBERSHIP PROGRESS REPORT

Results as of: 6/30/2019

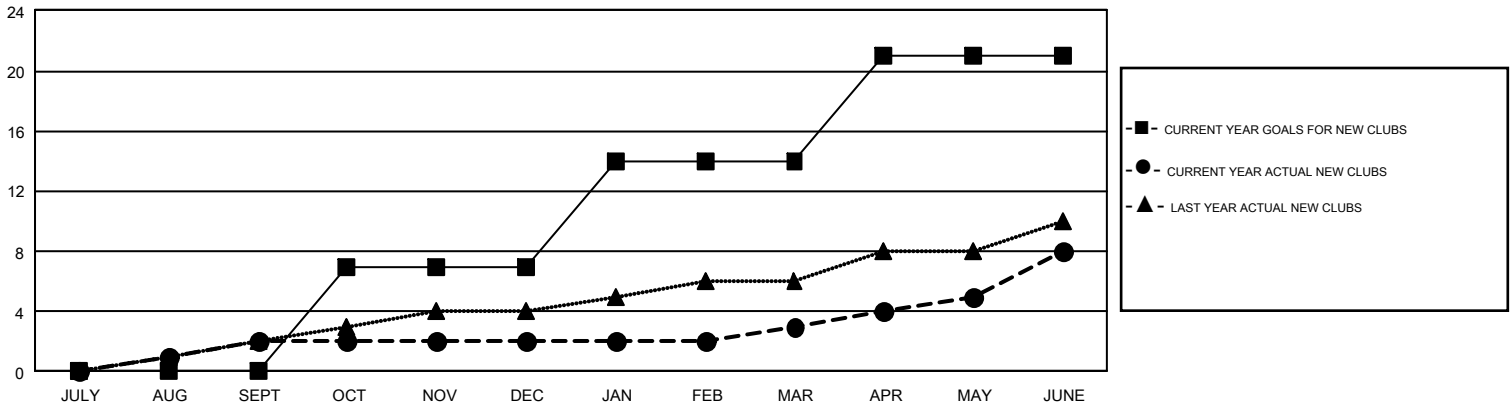
## GMT Constitutional Area 7, Group A

GMT: ANN ELDRIDGE

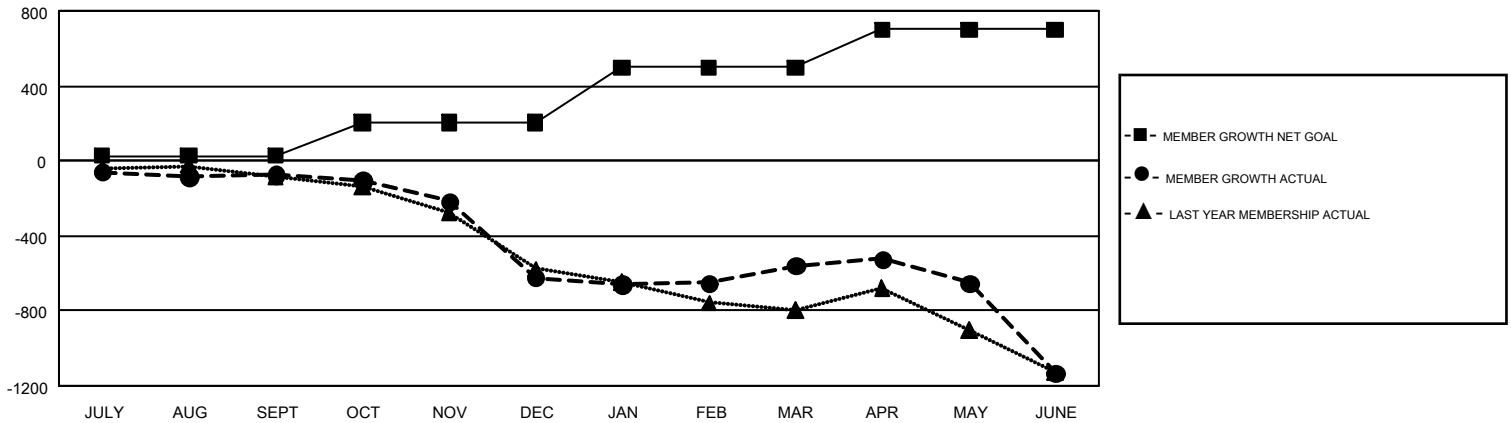
REPORT DOES NOT INCLUDE CLUBS IN UNDISTRICTED AREAS.

Clubs				Members			
RESULTS FOR 2018-2019				RESULTS FOR 2018-2019			
QUARTER	NEW CLUB GOAL	NEW CLUBS	DROPPED CLUBS	QUARTER	MEMBER GROWTH NET GOAL	MEMBER GROWTH ACTUAL	DROPPED MEMBERS ACTUAL (including transfers)
JULY/AUG/SEPT	0	2	7	JULY/AUG/SEPT	26	780	731
OCT/NOV/DEC	7	0	0	OCT/NOV/DEC	179	612	1,079
JAN/FEB/MAR	7	1	9	JAN/FEB/MAR	293	800	627
APR/MAY/JUNE	7	5	7	APR/MAY/JUNE	203	1,020	1,435

GOALS AND ACTUAL NEW CLUBS CUMULATIVE



GOALS AND ACTUAL MEMBERS CUMULATIVE



DROPPED CLUBS: 23	823 CLUBS OF 1,213 ADDED 1 OR MORE NEW MEMBERS	<u>GENDER DISTRIBUTION</u>
<u>DROPPED MEMBERS</u>	<a href="#">CLICK HERE FOR CUMULATIVE MEMBERSHIP DATA</a>	MALE            16,186 (65.79%)
DECEASED                            314		FEMALE            8,417 (34.21%)
CLUB CANCELLED                        52		TOTAL FAMILY UNIT MEMBERS                            4,078
OTHER                                    3,501		FAMILY MEMBERS PAYING HALF DUES                            2,064
TOTAL                                      3,867		